

# TIPS

## THE MAIN ADVANTAGES OF SPID TRAYS

- ✓ **UV** stabilizer to withstand time
- ✓ **E**cological : made of polypropylene our trays are re-usable and recyclable
- ✓ **S**mooth walls to insure a total cleaning and disinfection, an homogeneous cell filling and a perfect crop removal
- ✓ **E**specially designed to get more uniform plants and better performance of the young plants at transplant stage
- ✓ **A**dapted to automatic filling and transplanting systems
- ✓ **E**nsured traceability by barcodes or RFID label identification
- ✓ **S**tackable or nestable, our trays enable easy transportation and fit CC containers

# PACKING

**YOUR TRAY REFERENCE**

**EURO SIZE  
STRAWBERRY TRAYS**

**DANISH SIZE**

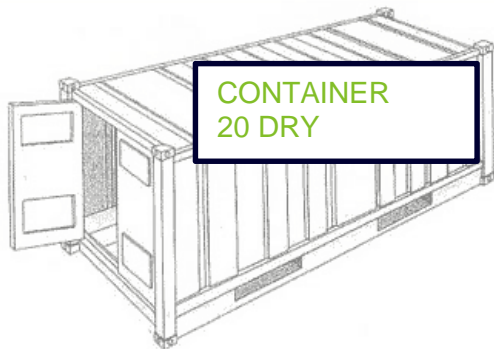
**PALLETS 100x120CM**

**PALLETS 90x110cm**



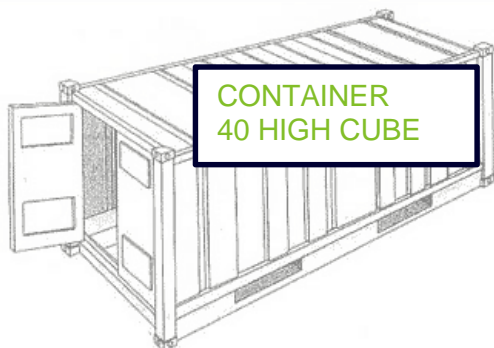
**26 PAL**

**30 PAL**



**10 PAL**

**12 PAL**



**22 PAL**

**26 PAL**